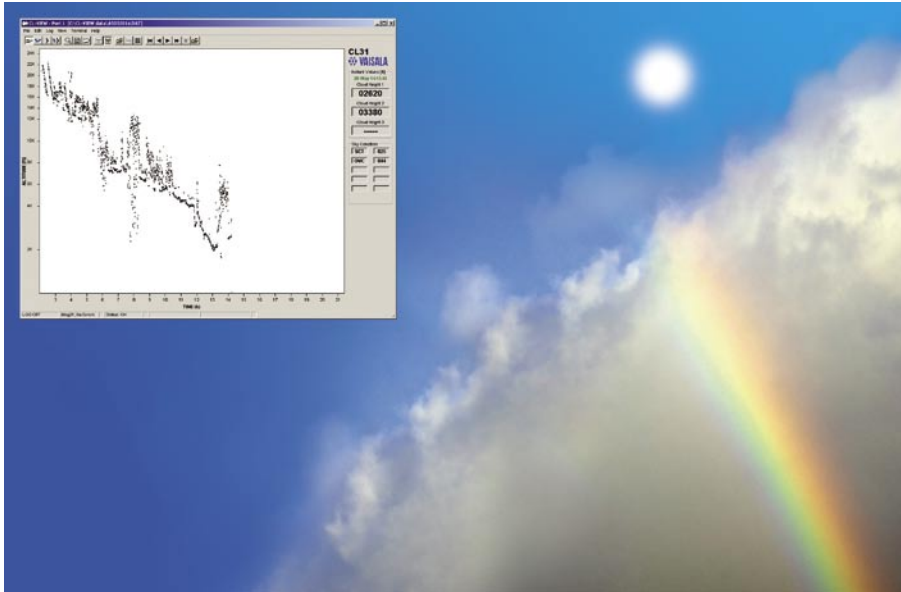


CL-VIEW

Graphical User Interface for Ceilometers



Features / Benefits

- Displays and logs data from one or more ceilometers while running other Windows applications
- Viewing of previously logged data is possible while logging and displaying real-time data
- Cloud base data and backscatter profiles in clear graphical form
- A large variety of user selections
- Maintenance access via internal Terminal program
- Sky condition window

CL-VIEW is Vaisala's improved graphical interface for ceilometer users.

Vaisala Graphical User Interface for Ceilometers CL-VIEW is an independent data collection, storage and presentation program designed for Vaisala's CL31, CT25K and CT75K Laser Ceilometers. The Ceilometer model CT12K is also partially supported.

The CL-VIEW program runs on a PC with Microsoft® Windows® 95, Windows® 98, Windows NT®, Windows® 2000 and Windows® XP operating systems, providing all conveniences of a graphical user interface. Menus, option screens, icons and help texts make the program easy and fast to use. Communication between the ceilometer and the PC is arranged via a direct RS-232 serial line or, at longer distances, via a modem.

The CL-VIEW is designed to be optimal for receiving, storing, visualising and analysing data. The software is very flexible, which makes it possible for the user to tailor it in order to suit their particular purposes at the optimal level.

Data Logging and Storage

The measurement messages are stored to the hard disk of the PC in log files. The log file length, i.e. the measurement period to be stored per file, can be defined by the user. The program automatically creates a new log file after the predefined period has elapsed and gives an alarm when there is approximately 24 hours of free disk space capacity left. Messages sent by the ceilometer can be viewed on-line in a message window.

Graphical Presentation

The graphical presentations include cloud detection, cloud intensity and backscatter profile graphs. In all three graphs also numerical cloud height information, ceilometer status, log status along with time and date are displayed. There are numerous user selectable features for each graph mode, such as altitude scales, grid on/off, compressed time scales and graph colours. Whole screens or the graphs only can be printed to hard copy printers. Screens can also be copied to the Windows clipboard and saved to new files.

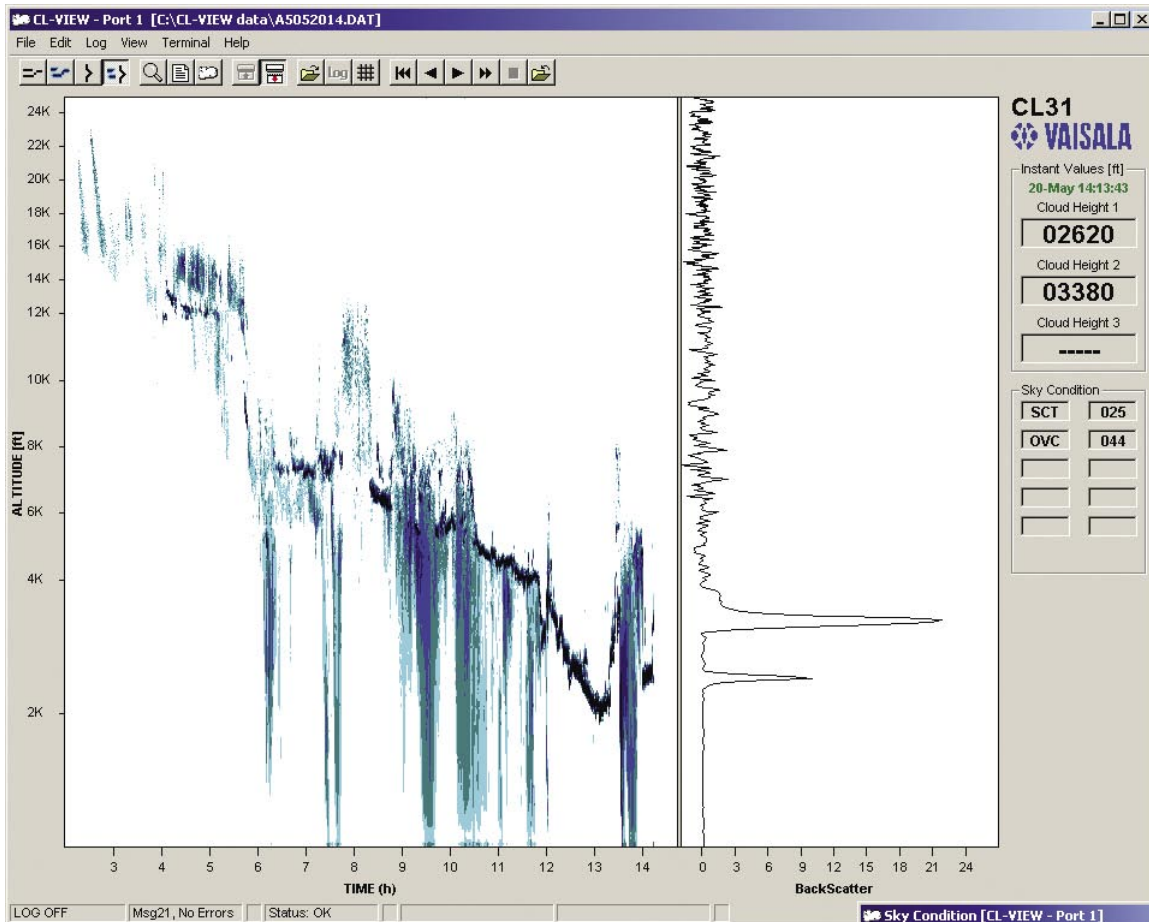
CL-VIEW has two operating modes: on-line and off-line mode. In the on-line mode, the program collects data from the ceilometer and shows real-time measurement results. In the off-line mode, the stored data files can be studied, by scanning the messages forward or backward one by one. Backscatter profiles can be converted to a suitable format of Microsoft® Excel or similar spreadsheet program for further studies.

Sky Condition Window

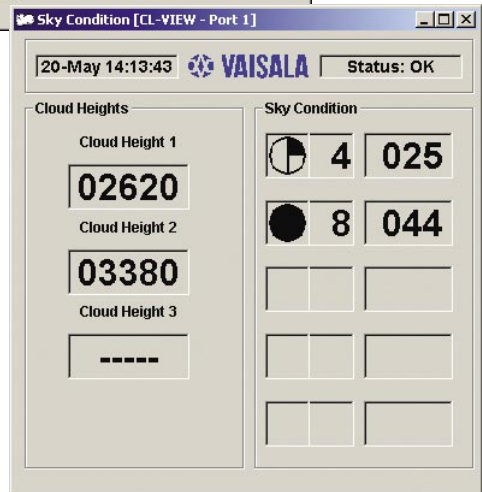
If the ceilometer is equipped with the Sky Condition option, this message content can be viewed either in the main window or in a separate window. It provides cloud layer height and information in either text or symbolic format.

Terminal Window

CL-VIEW has an internal Terminal program, which can be used to check the instrument status and change the internal parameters of ceilometer.



The cloud intensity is shown as a point graph, in which the colour is proportional to the strength of the return signal from the altitude in question. The backscatter profile is presented as a line graph in instant and average modes. Both modes can be displayed simultaneously.



The sky condition window presents cloud layer heights and the corresponding sky condition in either text, numerical or graphics format.

System Requirements

32 MB RAM, 50 MB free hard disk space.
 Microsoft® Windows® 95, Windows® 98, Windows NT®, Windows® 2000 or Windows® XP.